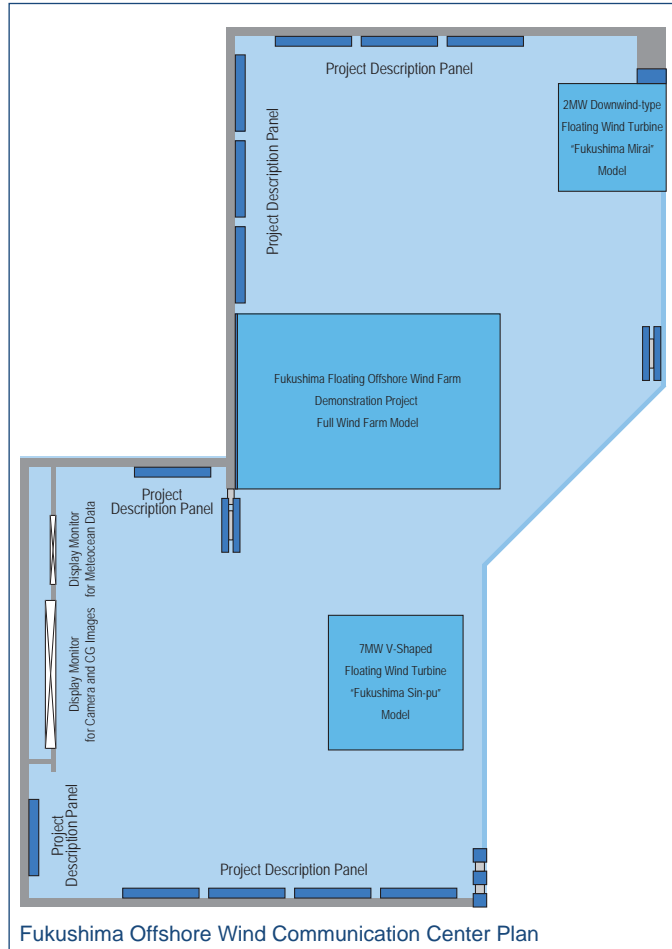


Opening of Fukushima Offshore Wind Communication Center

Fukushima Offshore Wind Consortium opened "Fukushima Offshore Wind Communication Center" at Iwaki Lalamew in Onahama, Iwaki-city on July 13th, 2013. The Consortium would like local residents and experts in various fields to know the purpose of Fukushima offshore wind farm demonstration project and its progress.

located close to the test site the center will be the onshore base for the communication and show the latest information on the project through exhibition panels, scale models and video clips.



Information

- Site location : Iwaki Lalamew 2F
「Live Iwaki Museum」
- Opening hours : 9:00~18:00

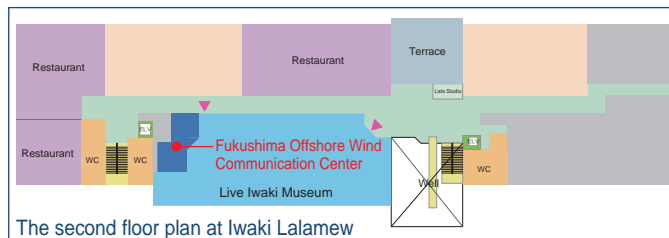


Iwaki Lalamew

Address 43-1 Tatsumi cho, Onahama, Iwaki city, Fukushima, 971-8101, Japan
Phone +81-246-92-3701 Homepage <http://www.lalamew.jp>

* As for holidays, please refer to "Iwaki, Lalamew" homepage mentioned above.

- Access by car
20 minutes from Yumoto IC of Joban Expressway
- Access by bus
40 to 50 minutes from Iwaki station bus stop #6 (To Onahama garage)
20 minutes from Izumi station bus stop #2 (To Iwaki station via Ena)
Get off at Iwaki Lalamew bus stop
- Access by train
15 minutes by car from Izumi station of JR Joban line



Contacts

Department of Civil Engineering, The University of Tokyo
Prof. Takeshi Ishihara, Manager Shigeru Taki, Tel +81-3-5841-6145
Address 2-11-16, Yayoi, Bunkyo-ku, Tokyo, 113-8656, Japan

Fukushima Offshore Wind Communication Center

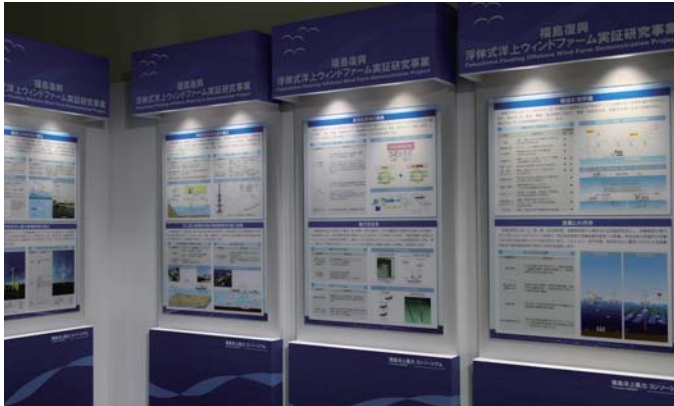


Marubeni Corporation
The University of Tokyo
Mitsubishi Corporation
Mitsubishi Heavy Industries, Ltd.
Japan Marine United Corporation
Mitsui Engineering & Shipbuilding Co., Ltd.
Nippon Steel & Sumitomo Metal Corporation
Hitachi, Ltd.
Furukawa Electric Co., Ltd.
Shimizu Construction
Mizuho Information & Research Institute, Inc.

Cooperated by Iwaki City

Exhibition Panels for the Description of the Demonstration Project

The research topics are shown briefly by figures and photographs. The research results and the latest information will be displayed as the progress of the projects.



Scale Models of Floating Offshore Wind Farm

Scale models are displayed, including a full wind farm model, a 2MW wind turbine on a compact semi-sub floater installed in July, 2013, and a world largest 7MW wind turbine on V shape semi-sub floater which will be installed in 2014.



Video Clip on a Large Monitor

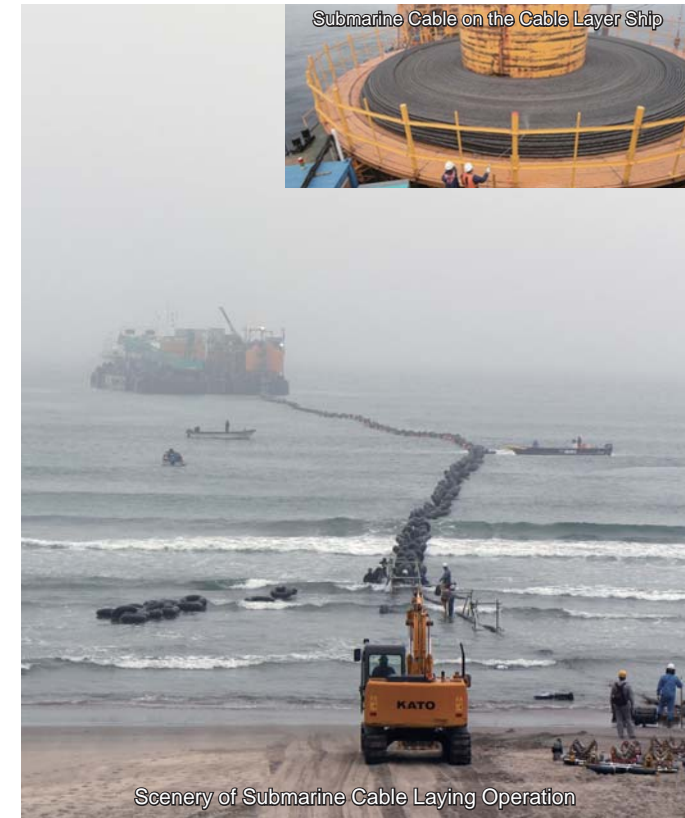
Computer graphic images of the demonstration project are shown on a 70 inch monitor. Camera images of offshore wind turbines and the video of the construction of floating wind turbine will also be displayed.



66kV Floating Substation "Fukushima Kizuna"



2MW Downwind-type Floating Wind Turbine "Fukushima Mirai"



Submarine Cable on the Cable Layer Ship

Scenery of Submarine Cable Laying Operation